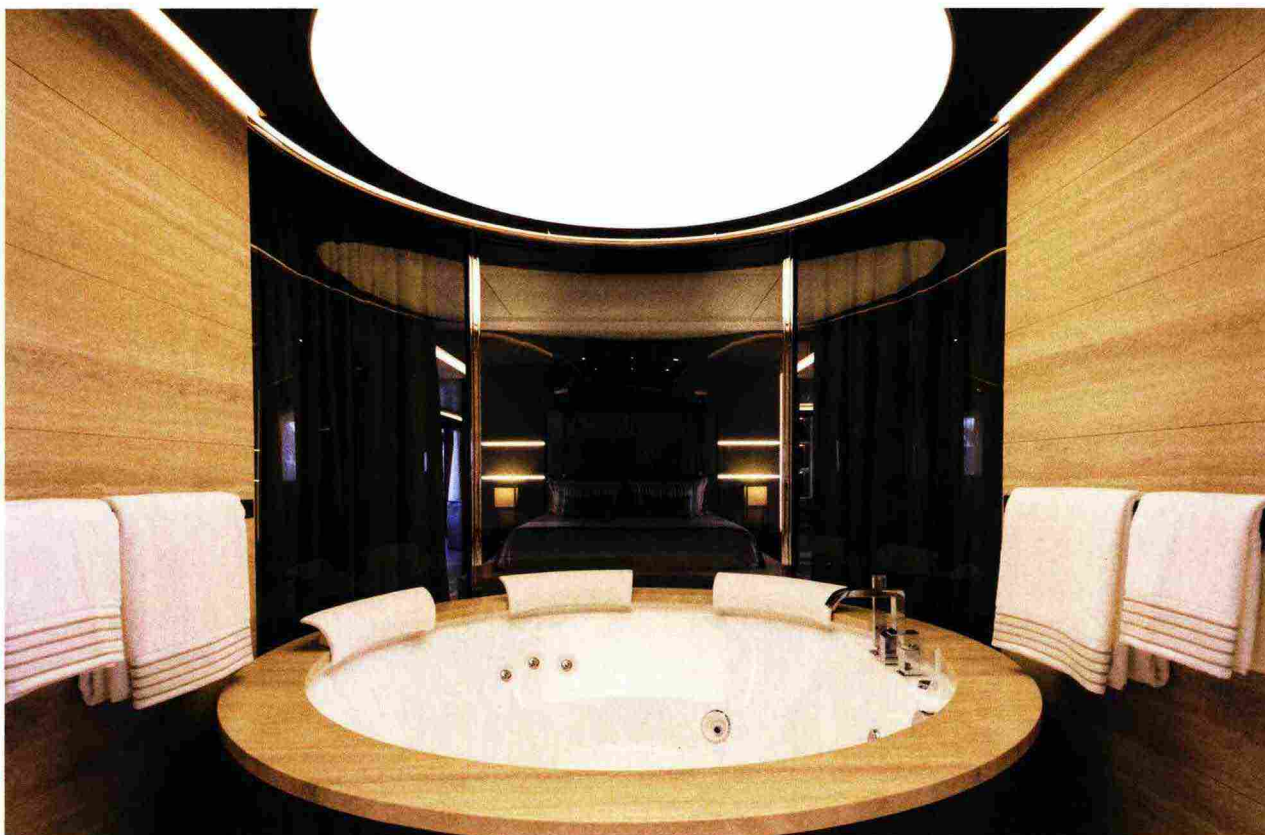
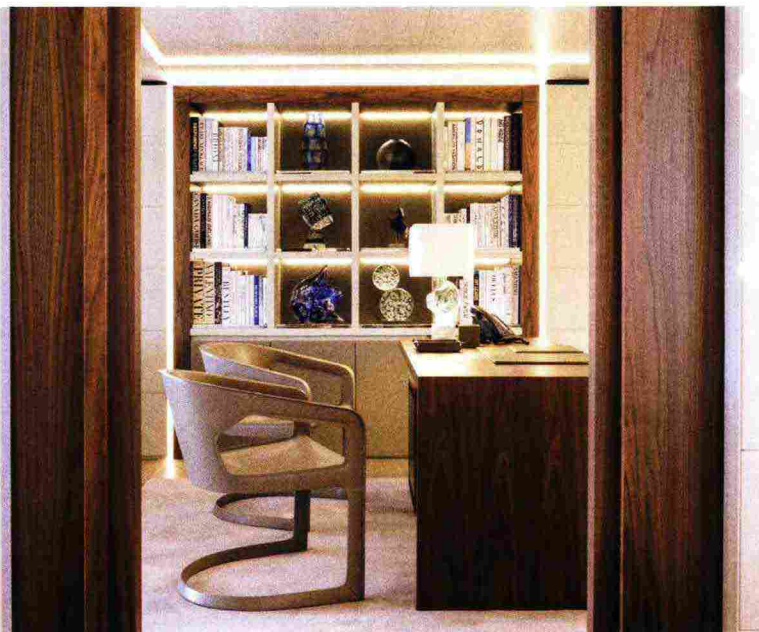




Naval architecture: Arrabito Naval Architects
Exterior & Interior design:
Team for Design - Enrico Gobbi
Furnishings: Armani Casa, Hermès, Minotti, Paola Lenti,
Poliform; custom items designed by Enrico Gobbi
Max overall length: 62.60 m - 205' 5"
Max beam: 11.00 m - 36' 1"
Main engines: 2450 RPM
Max speed: 33 knots
Cruising speed half-load: 26 knots
.....
Author: Francesca Gugliotta
Photo credits: Tom Van Oossanen, Michele Chirali

The beach club, when the aft hatch has been opened, permits enjoyment of 70 square meters of lounge space with a bar directly at the level of the sea. In the main saloon two large sliding lateral 4.5-meter windows provide a breathtaking view and abundant natural light for the interiors.” Indoor and outdoor furnishings, featuring items by Hermès and Armani Casa, as well as Italian artworks and sculptures from Murano, have been chosen by the architect Enrico Gobbi, who says: “Utopia is totally customized based on the requirements of the client. For the exteriors, the idea was to create a design ‘object,’ a streamlined boat, like a seagoing coupé, to place in front of the villa like a floating work of architecture, not so high as to block the view.” For the interiors: “A very clean Italian style, not extremely modern but contemporary, meaning warm surfaces in brushed walnut, fine leather with elegant stitching, touches of blues and grays in furnishings by Hermès and Armani Casa, as well as luxurious furniture designed by us and other brands like Minotti and Paola Lenti.





Owner & Hotel operator: Maistra Collection

Main Contractor: Kamgrad

Interior Contractor: Stilles

Architecture: 3LHD

Interior design: Lissoni Casal Ribeiro

Landscape design: Dionaea Vrotovi

Styling: Elisa Ossino Studio

Furnishings: Alessi, Antonio Sciortino, B&B Italia, Boffi, Bonacina 1889, Cappellini, Carl Hansen, Cassina, DePadova, Desalto, Fantoni, Gervasoni, Giardino di Legno, Glas Italia, Kartell, Knoll, Jansen, Lema, Living Divani, Malawi Cane, Paola Lenti, Pols, Porro, Potten, Riviera Maison, Salvatori, Shönhuber Franchi, Skagerak, Society Limonta, Tinekhome, Ton, Vitra

Kitchen consultant and producer: Gastro Tim

Lighting: DCW Editions, Flos, Oluce,

Santa&Cole, Viabizzuno

Doors: Blasi, Geze, Lualdi, Schuco, Vitrocsa

Bathrooms: Brera Group, Cotto, Duravit, Flaminia,

Fantini, Geberit, Inda, Salvatori

Carpets: Altai, Ege, Golran, Sartori Rugs

Floors & Walls: Alpolci, Kerakoll, Glatz, Magraf,

Mapei, Olkos, PPS Galeković

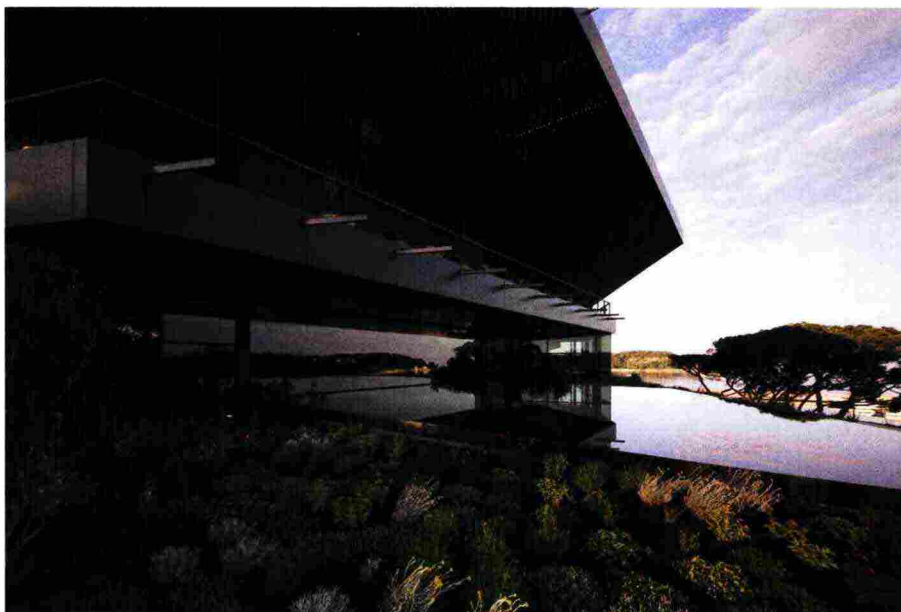
Artists: Veronica Gaido, Roberta Patalani,

Klara Rusan, Danijel Srdarev, Marco Tadik,

Hana Tintor, Predrag Todorović

Author: Manuela Di Mari

Photo credits: Jure Zivkovic



Adventure and comfort for passenger-explorers

With the latest solutions for environmental protection in mind, **The Champlain** is the second Ponant ship in the Explorer category. French taste and multicultural sensibilities can be seen in the project by Jean-Philippe Nuel, enhancing on-board experience without ever losing sight of the sea

The award-winning company Ponant never stops developing original and advanced solutions for new life experiences on board, featuring interiors where the concept of comfort, without straying from strict ergonomic tenets, reflects a marked domestic character. In the case of the mini-cruiser **The Champlain**, we see an ethnic-chic version filled with colors, objects, fabrics and furnishings based on the destinations and cultures explored by passengers. The name, in fact, references a courageous French explorer, cartographer and writer, Samuel de Champlain.

Owner: Ponant
 Construction: Vard Langsten
 Interior design: Jean-Philippe Nuel Studio
 Furnishings: &Tradition, Alki, B&B Italia, Bosc,
 Bottega Veneta, Casala, Cindarella, Enea, Ethimo, Flexform, Incidence,
 Kettal, Laval, Lemi, Ligne Roset, Linteloo, Made in Taunus, Moroso,
 Paola Lenti, Pedrali, Poltronà Frau, Shores, Studio Nuel, Ton
 Lighting: Aqua Design, Art Consult, Astro Lighting, Bottega Veneta,
 Brokis, Dedon, Expormim, Forestier, Gloster, Ialux, Marzais Creations,
 Marset, Parachilna, Santa Cole, Studio Nuel
 Fabrics: Cotting, Jab, Skai, Skopos, Testori

 Author: Antonella Mazzola
 Photo credits: Ponant, François Lefebvre





The giga Dream

The multidisciplinary studio Ciarmoli Queda has created the interior design of **My Dream**, a 106-metre super yacht that can accommodate up to 44 people

Six bridges spanning 106 meters in length, 23 guest cabins, a lobby of 400 square metres and up to 44 guests: these are the impressive numbers of the My Dream super yacht. For the realisation of the interior design the Ciarmoli Queda studio was chosen, founded in 2009 by Simone Ciarmoli and Miguel Queda. My Dream represents, however, a project of different scope and approach: "Free from every scheme – explain Ciarmoli and Queda – we analysed the spaces and began to imagine domestic

places with special attention to comfort. Only a few elements, often repeated, such as the boiserie of the walls, which in different environments change skin but the design remains faithful, or the ceiling, in fabric or glass. An expedient that creates uniformity, giving a precise sense of identity to each area of the yacht." The planning of the interior design aimed at the nautical world has differences compared to traditional sectors such as contract or residential interior design: "In yachting, the boiserie must be completely removable

Construction: Yachtline 1618
 Interior design: Ciarmoli Queda Studio
 Furnishings: Annibale Colombo, De Padova,
 Ferreira de Sá, Flexform, Effegibi, Liforma, Loro Piana,
 Marine Leather, Officina Ciani, Paola Lenti, Rosenthal,
 Rubelli, Tabu
 Overall length: 106.5 m
 Width: 13,10 m
 Bridges: 6

 Author: Mark Bell
 Photo credits: Frederic Ducout



Design and ingenuity by Pininfarina

Thanks to the new Super Flybridge layout – an engineering solution by Paolo Pininfarina and his team – the **Princess X95** offers 10% more open space and 40% more internal space with respect to traditional motor yachts

Getting on board the new X95 by Princess Yachts, one has the impression of being on a maxi-vessel, in spite of the almost 30-meter overall size. This is the result of an engineering solution created by Pininfarina: “The distinctive element of the X95 is the Super Flybridge, a new layout that brings an increase of 10% of outdoor spaces and 40% for the interiors, with respect to a traditional motor yacht,” says Paolo Pininfarina, president of the group, which has collaborated for several years with the British producer Princess and the naval architecture firm Olesinski. “The center of the project is a unique concept of the flybridge and the internal space of the main deck, both covered for almost the entire length of the yacht, creating the

Super Flybridge. Both the flybridge and the main deck extend for nearly the whole length of the yacht, offering ample, flexible spaces. The length of the main deck up to the bow creates an unprecedented space that extends for almost 18 meters (59 feet), flooded with light by full-height glazing on both sides.”The design redefines the areas and the architecture, offering an incomparable experience on the sea. “With its splendidly sculpted surfaces and long continuous lines, the X95 has a fuel capacity of 13,400 liters, so it is perfectly suited to adventurous journeys in faraway lands. The overall length is 29.1 m, with a width of 6.77 m.” The spaces are worthy of a megayacht when one enters the saloon on the main deck, “permitting a view that ranges all the way to the window at the bow. Going up the internal staircase leading to the upper deck, one has another unique experience: a completely closed, climate-controlled sky lounge.



The place of honor on the lower deck is for the owner's cabin with a private bathroom, and the bow cabin with its own closet and bathroom. Each of the other port and starboard cabins can be configured with two single beds or one double, while the ample crew quarters complete the large nighttime zone." The interior design reflects what Princess Yachts defines as an 'open concept': "The X95 is the first model of the new X Class, and the challenge has been to set new standards of layout excellence, with large adaptable, dynamic zones, offering yachtmen and their guests a flexible lifestyle on board." Among the coveted details: "A small sofa has been placed at the bow, connected to the mooring zone and protected from prying eyes and wind, with a complete view of the interior through the window at the bow, and of the seat through the space between the gunwale and the superstructure." The warm, pale tones "make the spaces seem even larger. The internal furnishings also have the fluid forms seen on the outside, generating a strong inside-outside connection. For the décor of the sundeck, there are pieces by Paola Lenti, Kettle and Tribù, while all the fixed furnishings have been custom made for this boat."





Owner: Princess Yachts
Architecture: Bernard Olensinski
Design: Pininfarina
Furnishings: Kettal, Paola Lenti, Tribù,
Length: overall 95ft 6in (29.1m)
Displacement approx. (half load): 104 tonnes*
Engines: Twin MAN V12-1900 (2x1900mhp)
.....
Author: Francesca Gugliotta
Photo credits: courtesy of Pininfarina
